

Techzite



WALL **Techzite Kiruna Triangoli Tessere** 12"x13.5" rect.
FLOOR **Techzite Kiruna** 24"x24" rect. - **Techzite Kiruna** 3"x12"



WALL **Techzite Gameti Line Tessere** 12"x24" rect. - **Techzite Gameti** 12"x24" rect.
FLOOR **Techzite Gameti** 24"x24" rect. - 12"x24" rect.





WALL **Techzite Deline** Line Tessere 12"x24" rect.
FLOOR **Techzite Deline 20 mm** 24"x48" rect.

COLORS




grout
Mapei 110
Kerakoll Fugabella 05


grout
Mapei 111
Kerakoll Fugabella 06


grout
Mapei 110
Kerakoll Fugabella 06


grout
Mapei 113
Kerakoll Fugabella 09


grout
Mapei 119
Kerakoll Fugabella 10

PRODUCT CODE	Th.	Kiruna	Deline	Vorkuta	Tulita	Gameti
--------------	-----	--------	--------	---------	--------	--------

MATT

24"x48" rect.	9 mm	J024	J026	J025	J027	J028
24"x24" rect.	9 mm	J062	J064	J063	J065	J066
12"x24" rect.	9 mm	J052	J054	J053	J055	J056
3"x12" .	9 mm	J038	J040	J039	J048	-

GRIP

12"x24" rect.	9 mm	J057	J058	J059	J060	J061
---------------	------	------	------	------	------	------

TEXTURED

24"x48" rect.	20 mm	J033	J133	J034	J035	J036
18"x36" rect.	20 mm	-	J029	-	J030	J031

TECHNICAL FEATURES

Full-body coloured porcelain stoneware

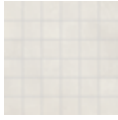


	B.C.R.A	D.C.O.F. Test (BOT 3000)	B.S.7976-2:2002	DIN 51130	DIN 51097	ISO 10545-13
Matt	> 0,40	≥ 0,42 Wet	≥ 36 Dry ≥ 36 Wet	R10	A + B	A-LA-HA
Grip	> 0,40	≥ 0,55 Wet	≥ 36 Dry ≥ 36 Wet	R11	A + B + C	A-LA-HA
Textured	> 0,40	≥ 0,55 Wet	≥ 36 Dry ≥ 36 Wet	R11	A + B + C	A-LA-HA



DECORS

Kiruna



I900
Tessere
12"x12"

Deline



I900
Tessere
12"x12"

Vorkuta



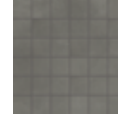
I901
Tessere
12"x12"

Tulita



I902
Tessere
12"x12"

Gameti



I903
Tessere
12"x12"

Kiruna



J092
Triangoli Tessere
12"x13.5"

Delite



J094
Triangoli Tessere
12"x13.5"

Vorkuta



J093
Triangoli Tessere
12"x13.5"

Tulita



J095
Triangoli Tessere
12"x13.5"

Gameti



J096
Triangoli Tessere
12"x13.5"

Kiruna



J097
Line Tessere
12"x24"

Delite



J099
Line Tessere
12"x24"

Vorkuta



J098
Line Tessere
12"x24"

Tulita



J100
Line Tessere
12"x24"

Gameti



J101
Line Tessere
12"x24"

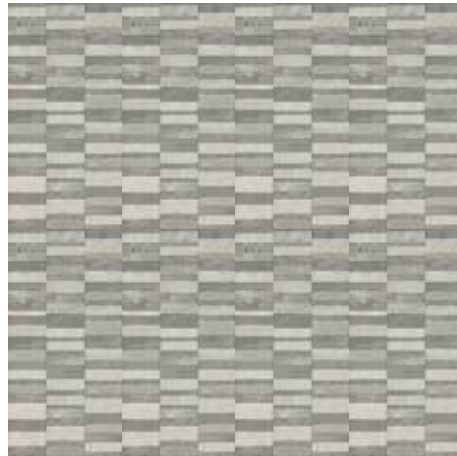
To highlight the decoration with mosaic, it is suggested to use grouts with a higher contrast than indicated for the installation of the backgrounds.

Decors Stack



J032
Stack
24"x48" rect.

LAYING SCHEMES



* Controlled random boxing of 10 subjects

DECORS

Deline



J049
Carved
3"x12"

Vorkuta



J050
Carved
3"x12"

Tulita



J051
Carved
3"x12"

* Controlled random boxing of 13 subjects

DECORS 20 MM

Decors Alberata



J037
Alberata
24"x48" rect.

LAYING SCHEMES



* Controlled random boxing of 6 subjects

SPECIAL PIECES

		Kiruna	Deline	Vorkuta	Tulita	Gameti
	Battiscopa rett. 3"x24"	J102	J104	J103	J105	J106
	Scalino rett. 13"x48"x1.5"	J107	J109	J108	J110	J111
	Ang. scalino rett. dx 48"x13"x1.5"	J112	J114	J113	J115	J116
	Ang. scalino rett. sx 48"x13"x1.5"	J117	J119	J118	J120	J125
	Elemento Elle Grip 24"x6"x1.5"	J127	J129	J128	J130	J132

NOTE
NOTES



For further details about HITHICK in 20mm thickness and in particular for recommendations, instructions and restrictions of use and installation, please email info@marbletrend.com



For laying, cleaning and maintenance tips, please email info@marbletrend.com